

**SONY.**

Hi-Fi Products  
**Service Bulletin**

**CSA-13**

Sony Service Company - Technical Services  
A Division of Sony Electronics Inc.  
Sony Drive, Park Ridge, New Jersey 07656

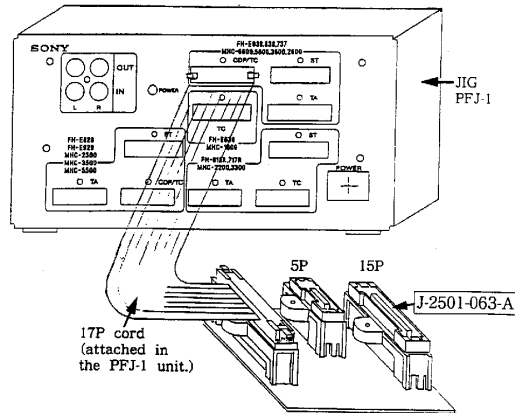
**Model:** HCD-C70/C90 **No. 385**  
**Subject:** Extender Board Jig Now Available **Date:** March 18, 1994

**Symptom:**  
(\*\*) A extender board jig is now available to aid in the repair of this model.

**Solution:** The extender board jig shown in the diagram below provides the means to apply power to the HCD-C70/C90 during the repair process. Order the extender board jig as shown in the chart below.

DESCRIPTION	PART NUMBER
EXTENDER BOARD	J-2501-063-A
15-PIN EXTENSION CABLE	1-751-469-11

**Note:** The 17-Pin extension cable is supplied with the PFJ-1 Jig.



Reference: FPR-P0496  
Autoflagged - YES



PRINTED IN USA  
CSA-13394-5